

LiNA Xcise®

Cordless Laparoscopic Morcellator



Cut the Cord



Innovation in Gynecology

LiNA Xcise®

Cordless Laparoscopic Morcellator



Simplicity. Instant-use fully disposable design.

No assembly required. No drive box or cables.

Lightweight cordless design incorporates motor and battery in one device. Open the package, insert the obturator, and you are ready to start morcellating.

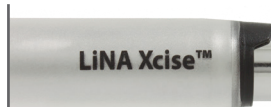


Safety. Control your blade exposure.

LiNA Xcise® features 3 blade positions to choose from to aid in safety and control during tissue morcellation.

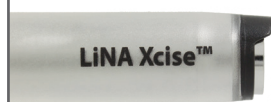


Cut 2



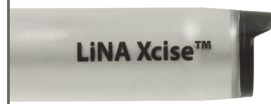
Blade is fully exposed for coring.

Cut 1



Blade is partially covered to cut with a peeling effect around the surface of the specimen.

Safety Guard

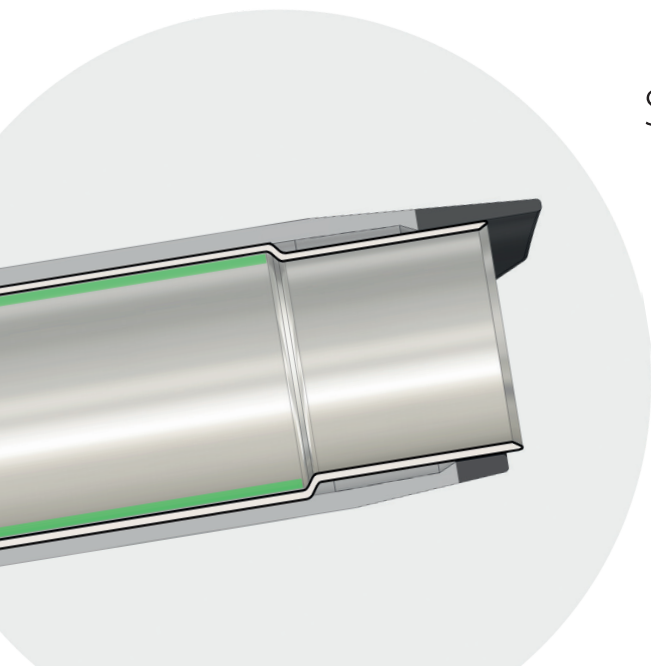


Blade is fully retracted into the cannula for patient safety.

Speed. Flared Tube Technology™

Cutting tube diameter increases as tissue is pulled through, creating a gap (highlighted in green at left) which reduces drag between the blade and the tissue. Drag is reduced, facilitating longer strips with less tissue breakage.

High torque ~1000 RPM motor to power through tissue.





360° adjustable coreguard

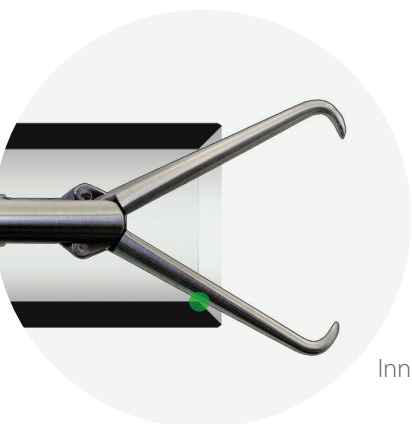
Ergonomic handle with precision trigger
Less hand fatigue and improved control with
the ability to rapidly pulse the trigger.

Snap-on
5mm Reducer Cap



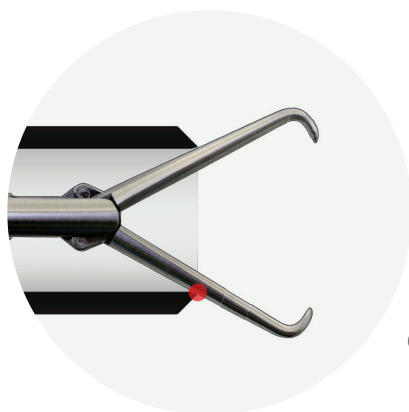
LiNA Xcise®

Cordless Laparoscopic Morcellator



Inner Bevel - LiNA Xcise®

Sharpness. 300 series stainless steel blade features a larger inner bevel to prevent dulling from inadvertent contact with the tenaculum.



Outer Bevel

Indications for use:

Indicated for cutting, coring, and extracting tissue in operative laparoscopy, including gynecologic procedures such as hysterectomy and myomectomy. For more information please refer to the Instructions for use.

Ordering Information:

Product code	Description	UOM
MOR-1515-6	LiNA Xcise® – Laparoscopic Morcellator 15mm, battery powered morcellator system with obturator. Sterile, single use.	Box of 6 ea

Distributor:

LiNA Medical USA

Norcross, GA 30093, USA

Tel: +1 (855) 546-2633 | Fax: +1 (678) 380-0500 | info@linamed.com | www.linamed.com

©2022 LiNA Medical ApS. All rights reserved. All products may not be available for sale in all geographies. Please contact your local LiNA Medical representative for information about products available in your area. This information is intended for healthcare professionals. If you are a patient seeking more information, please consult your healthcare provider. Before using any LiNA product, always refer to the IFU included in our packaging for complete indications for use, contraindications, warnings, precautions, and instructions.

LiNA is a registered trademark of LiNA Medical in EU, US and CN.

LiNA Medical ApS

• Formervangen 5
DK-2600 Glostrup
Denmark

• Tel.: +45 43 29 66 66
Fax: +45 43 29 66 99
info@lina-medical.com

• www.lina-medical.com
CVR: 10054974

EN ISO 13485:2016
Quality Management System

