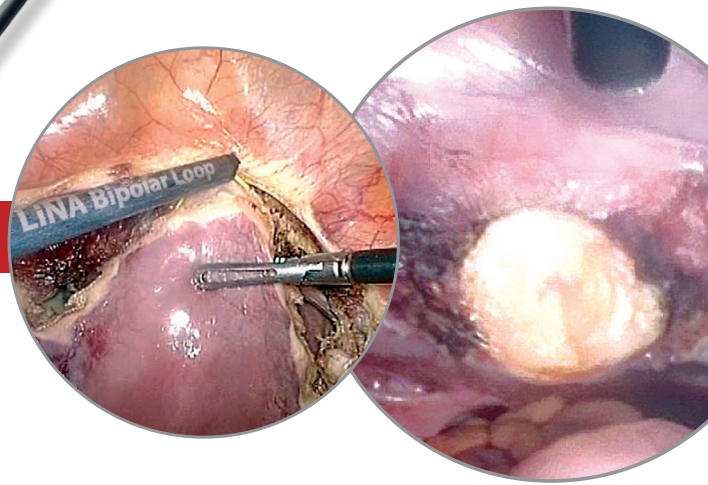


LiNA Bipolar Loop™

*Laparoscopic Supracervical Hysterectomy (LSH)
and subserosal pedunculated myomectomy*

Amputation in a few seconds



LiNA Bipolar Loop™

Laparoscopic Supracervical Hysterectomy (LSH)
and subserosal pedunculated myomectomy

Safety. Low energy, high effect.

Bipolar technology offers immediate cutting action and improved safety with only 55-70 watts. No grounding pad needed.

Visualization is aided by a protective ceramic tip, allowing for optimum accuracy in loop positioning.

The protective ceramic tip in conjunction with the yellow insulation isolates the cutting action to the tissue between the two electrodes for improved safety.

Fast. Clean cut in seconds.

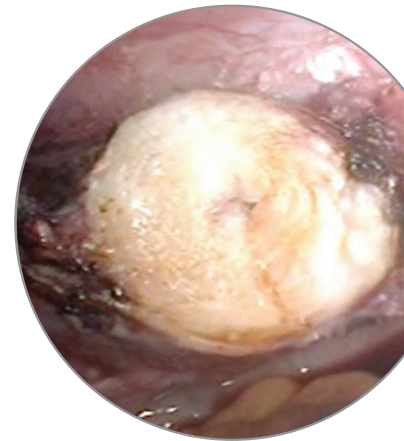
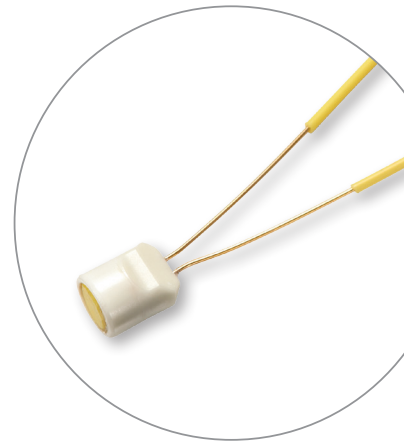
Reduce your cervix amputation time by at least several minutes.

Cut and coagulation in one step leaves a clean hemostatic surface, which reduces the need for further coagulation of the cervical stump or peduncle.

Simple. No special generator required.

LiNA Bipolar Loop™ is compatible with standard electro-surgical units to assure quick and easy setup.

3 meter cable with standard 2-pin bipolar plug or EURO connector.



Ordering Information:

LiNA Bipolar Loop™ **CE** 2274

Product code	Description	UOM
BL-160	LiNA Bipolar Loop™ – Endoscopic Bipolar Loop for LSH & Myomectomy. Small Loop - 160mm x 80mm. 2-pin plug. Sterile, single use.	Box of 6 ea
BL-200	LiNA Bipolar Loop™ – Endoscopic Bipolar Loop for LSH & Myomectomy. Large Loop - 200mm x 100mm. 2-pin plug. Sterile, single use.	Box of 6 ea
BL-240	LiNA Bipolar Loop™ – Endoscopic Bipolar Loop for LSH & Myomectomy. X-Large Loop - 240mm x 120mm. 2-pin plug. Sterile, single use.	Box of 6 ea
BL-160-E	LiNA Bipolar Loop™ – Endoscopic Bipolar Loop for LSH & Myomectomy. Small Loop - 160mm x 80mm. EURO connector. Sterile, single use.	Box of 6 ea
BL-200-E	LiNA Bipolar Loop™ – Endoscopic Bipolar Loop for LSH & Myomectomy. Large Loop - 200mm x 100mm. EURO connector. Sterile, single use.	Box of 6 ea
BL-240-E	LiNA Bipolar Loop™ – Endoscopic Bipolar Loop for LSH & Myomectomy. X-Large Loop - 240mm x 120mm. EURO connector. Sterile, single use.	Box of 6 ea

Important:

Please refer to the Instruction for Use for complete instructions, contraindications, warnings and precautions.

©2025 LiNA Medical AG. All rights reserved.

LiNA is a registered trademark of LiNA Medical in EU, US and CN.

EU MDR 2017/745 device class: IIb.

Name and number of the Notified Body: TUV Nord Polska Sp. z o.o. # 2274



LiNA Medical AG, Platz 3, 6039 Root D4 | Switzerland
Phone: +41 78 617 56 56, info@lina-medical.com | www.linamed.com

EN ISO 13485:2016
Quality Management System



LiNA Medical Polska Sp. z o.o., Rolna 8A, Sady, 62-080 Tarnowo Podgórze | Poland
Phone: +48 61 222 21 21, info.poland@lina-medical.com | www.lina-medical.pl